

# SKF Wheel bearings

OE knowledge and experience trusted by all major global manufacturers

## SKF Aftermarket Support

Scan the QR code to visit official SKF Aftermarket website.

View the latest SKF innovative products, access the complete product range and technical support.



Follow SKF Aftermarket YouTube Channel.

View helpful technical videos and assembly instructions on our SKF YouTube channel in a clear and informative way.



Follow SKF Automotive Social Channels.

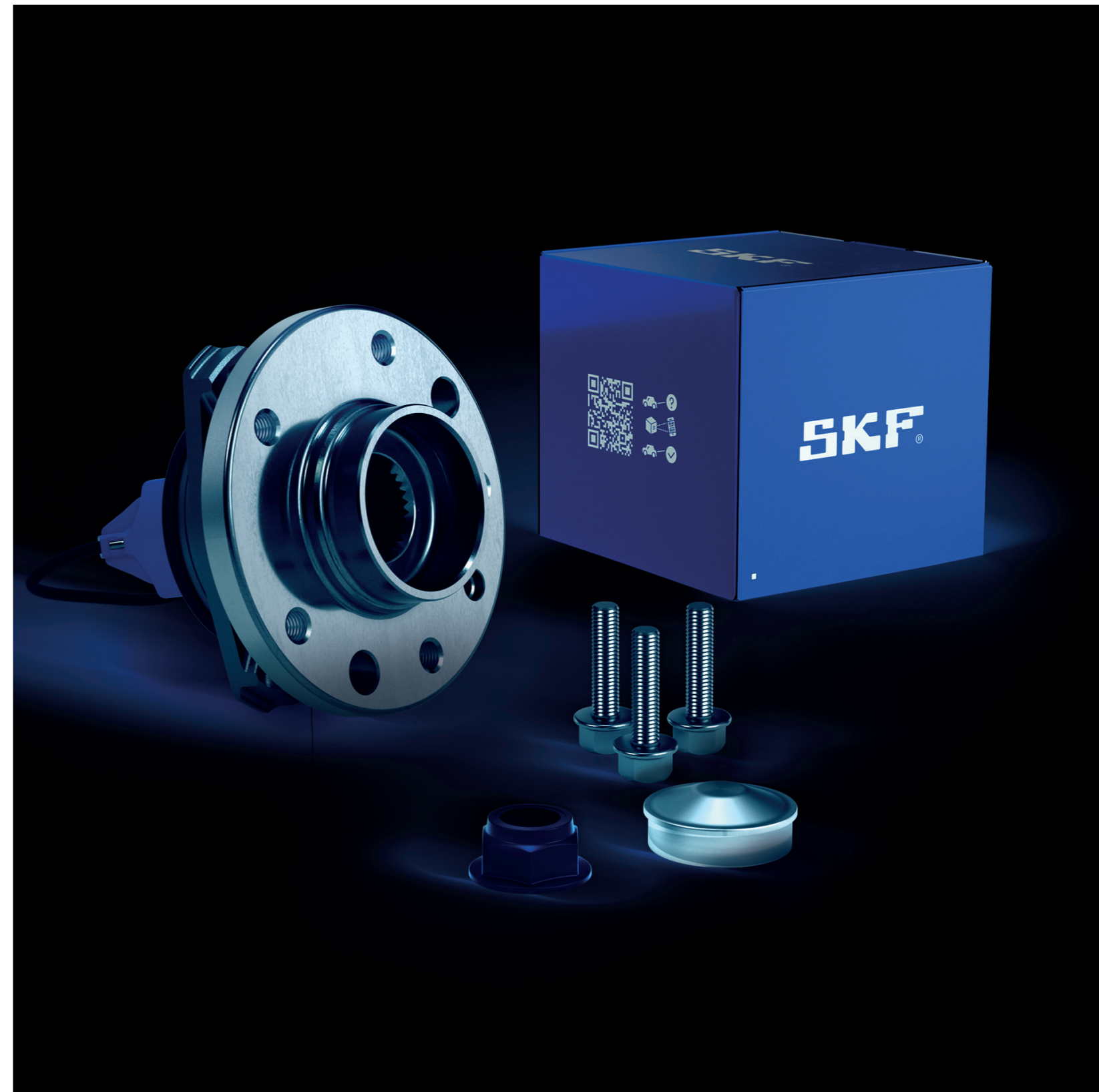


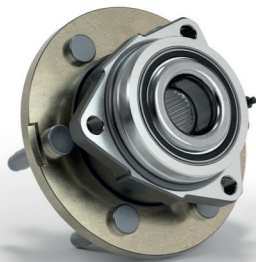
Contact SKF Technical Support to help resolve your automotive problems.



skf.com | vehicleaftermarket.skf.com  
 © SKF is a registered trademark of AB SKF (PUB 80/P2 19509 EN).  
 © SKF Group 2022. All rights reserved. Please note that this publication may not be copied or distributed, in whole or in part, unless prior written permission is granted.  
 Every care has been taken to ensure the accuracy of the information contained in this publication, but no liability can be accepted for any loss or damage whether direct, indirect or consequential arising out of the use of the information contained herein.

PUB 80/P2 19509 EN • November 2022  
 Certain image(s) used under license from Shutterstock.com.



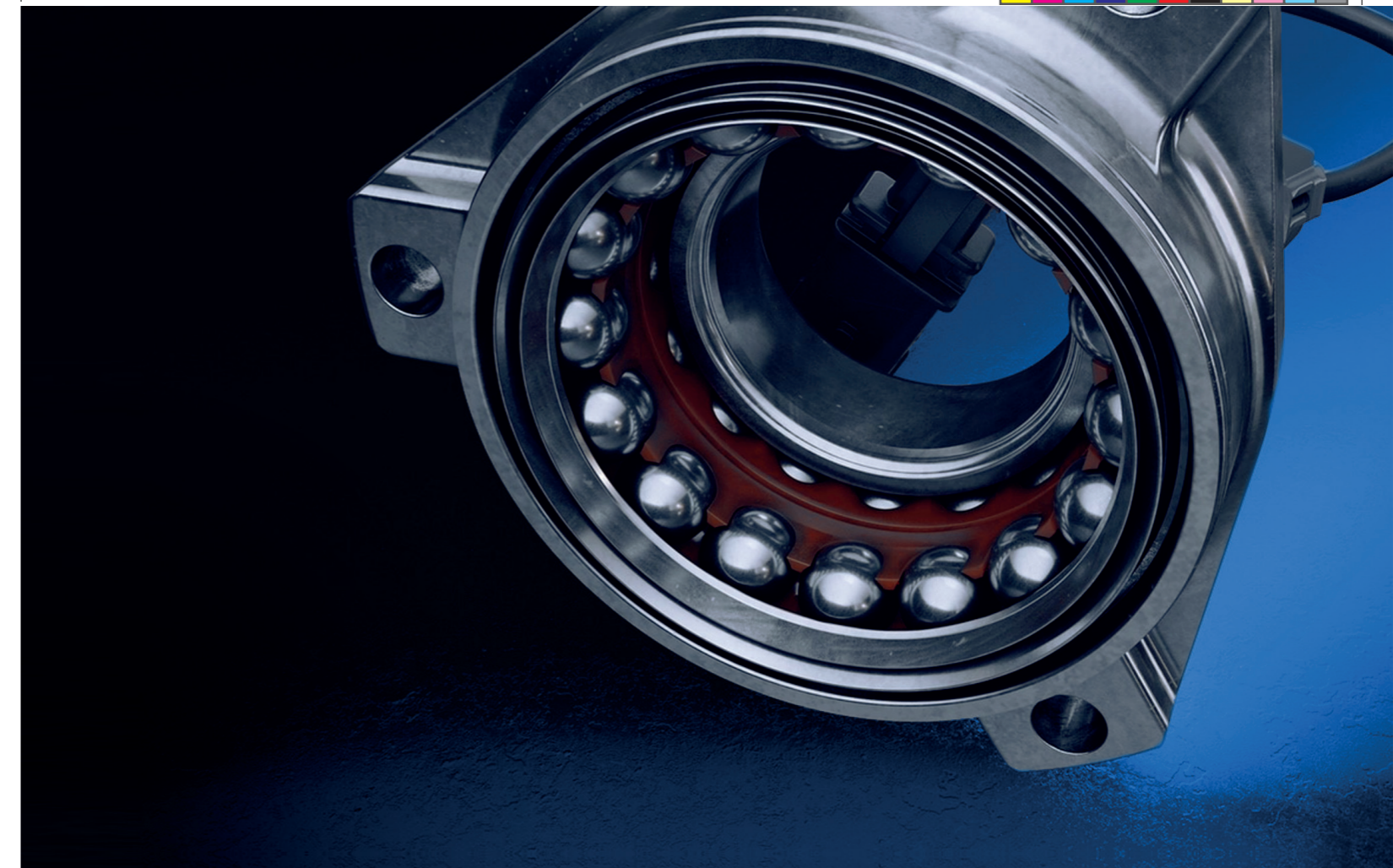


Though you may never even see it, a wheel hub bearing unit is an important part of your car's wheel assembly, enabling your wheels to turn freely and playing a crucial role in the safety and handling characteristics of your vehicle. Comprised of precision-manufactured bearings, seals and sensors in one pre-assembled unit, a wheel hub bearing unit is critical to your car's performance, from the smoothness of the ride to fuel efficiency, to the integrity of your anti-lock braking system (ABS) and to the integrity of the whole car.

So, when it's time to replace one, you'll want a replacement hub bearing that's as good – and safe – as the original that came with your car when it was new.

## Choose SKF on board

**Unquestionable quality for OEMs – and for you**  
SKF is a trusted engineering partner and parts supplier to every major vehicle manufacturer, and we continue to win industry awards and accolades from our customers. Through our distributor partners, we make this same level of quality available in the aftermarket, under the SKF brand. Invest in quality, safety and reliability. Ask for SKF premium hub bearings by name.



## HBU

- Designed and validated to OEM quality standards.
- Equipped with an integrated ABS electronic sensor, built with high quality materials that meet OEM standards and provide robustness and exact fit to the vehicle.
- 100% sensor function test, no signal verification is required. The sensor ensures proper flow of vital information to the vehicle's ABS and stability control systems.
- Flanged rings.
- Made of high quality carbon steel to maximize safety and durability.
- Rolling elements.
- Precision machining and raceway contact allows for smooth rotation.
- Designed to withstand extreme load conditions.
- High performance SKF grease technology specially formulated for automotive wheel bearings and designed to provide long lasting performance and enhance wheel end safety. It operates under severe conditions at low and high speeds and reduces friction and wear for long service life.
- SKF sealing technology includes a multi-lip design made of advanced elastomer compounds to provide low friction, effective water and dirt contamination exclusion and long service life.
- The seals are resistant to extreme high/low temperatures and make the HBU sealed for life.
- Assembled with precise axial preload to maximize durability and reduce CO<sub>2</sub> emissions.
- Low lateral flange eccentricity reduces brake pedal pulsations and increases passenger comfort and braking safety.
- Delivered "ready to mount".